

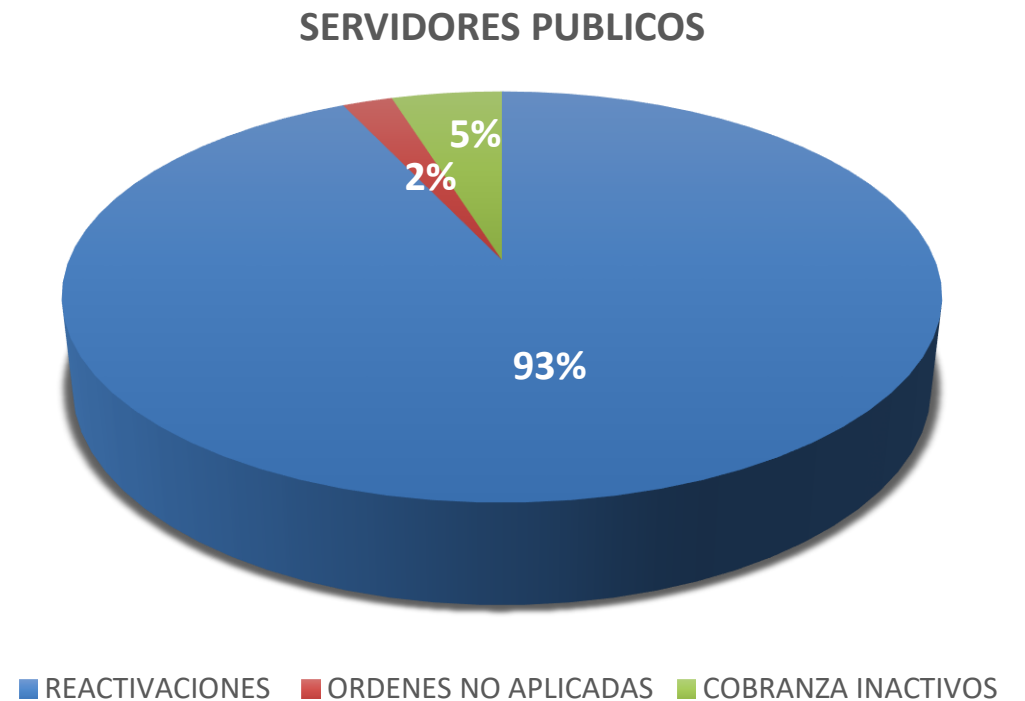


# IPECOL

**REPORTE DE  
COBRANZA  
ADMINISTRATIVA 2020**

## TOTAL DE PRÉSTAMOS REACTIVADOS ENE – DIC 2020

CONCEPTO	SERVIDORES PUBLICOS	MONTO REACTIVADO
REACTIVACIONES	212	\$7,601,428.15
ORDENES NO APLICADAS	5	\$1,507,856.84
COBRANZA INACTIVOS	11	\$277,006.01
<b>TOTAL</b>	<b>227</b>	<b>\$9,386,291.00</b>



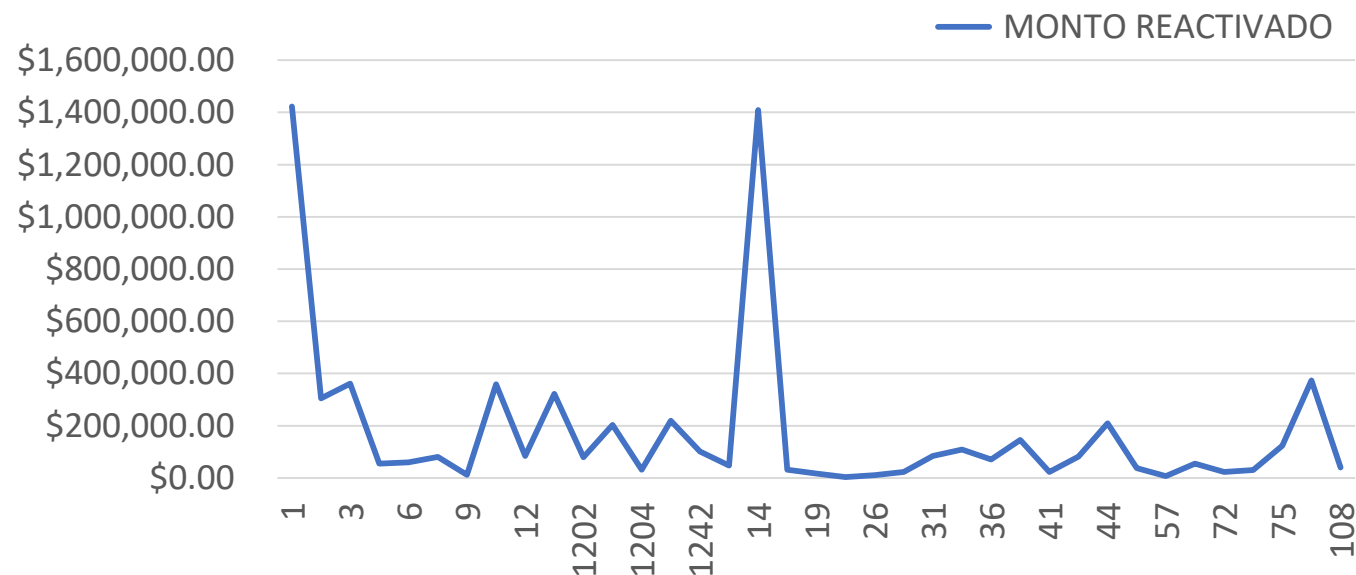
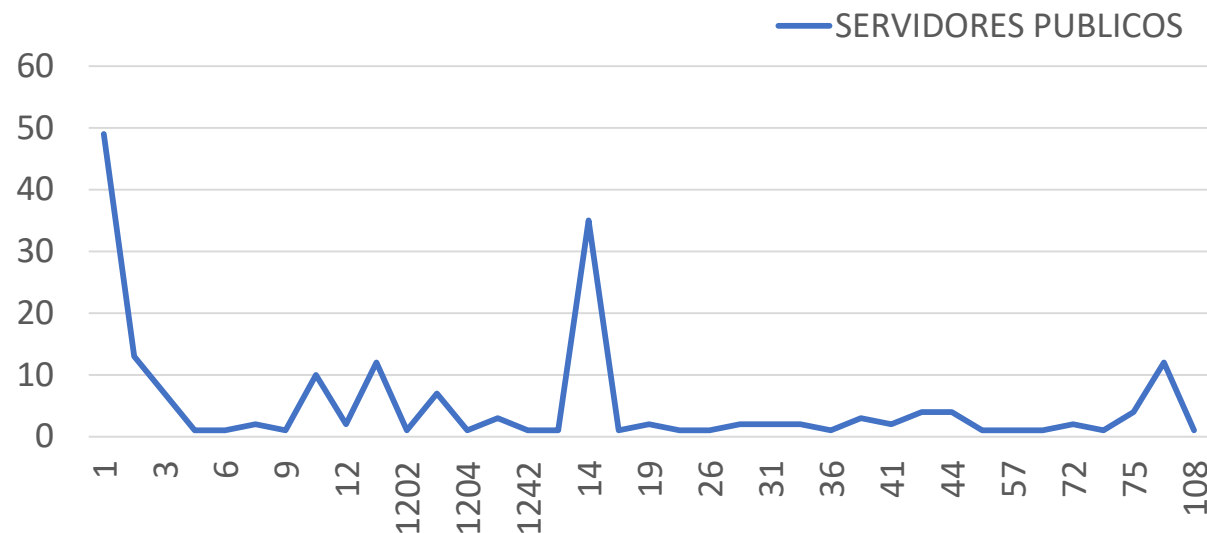


ENTIDAD	SERVIDORES PUBLICOS	MONTO REACTIVADO
1	56	\$1,894,543.51
2	14	\$315,156.68
3	7	\$360,890.62
4	2	\$56,145.78
6	2	\$61,325.30
8	4	\$94,135.69
9	2	\$12,112.69
10	10	\$293,029.01
12	2	\$84,803.68
1201	12	\$322,041.18
1202	1	\$79,342.20
1203	8	\$203,932.17
1204	2	\$464,926.93
1214	3	\$219,579.84
1242	1	\$101,610.72
13	1	\$47,607.90
14	35	\$1,409,057.65
15	1	\$31,323.02
19	3	\$19,576.54
23	1	\$3,305.84
26	1	\$10,407.60
29	2	\$23,528.28
31	2	\$84,045.24
34	2	\$109,050.94
36	1	\$70,526.52
39	3	\$145,648.60
41	2	\$23,051.37
43	4	\$81,382.46
44	4	\$209,760.56
45	1	\$37,737.27
57	1	\$7,324.48
60	1	\$54,257.76
72	2	\$22,412.87
74	1	\$30,636.63
75	5	\$203,938.28
84	12	\$373,384.64
108	1	\$39,887.70
<b>TOTAL</b>	<b>212</b>	<b>\$7,601,428.15</b>

# PRÉSTAMOS ACTIVADOS POR ENTIDAD DE ENERO – DICIEMBRE 2020

# PRÉSTAMOS PERSONALES

ENTIDAD	SERVIDORES PUBLICOS	MONTO REACTIVADO
1	49	\$1,423,039.06
2	13	\$304,686.24
3	7	\$360,890.62
4	1	\$55,098.72
6	1	\$59,109.12
8	2	\$80,556.48
9	1	\$11,784.99
10	10	\$359,348.51
12	2	\$84,803.68
1201	12	\$322,041.18
1202	1	\$79,342.20
1203	7	\$202,885.19
1204	1	\$31,712.40
1214	3	\$219,579.84
1242	1	\$101,610.72
13	1	\$47,607.90
14	35	\$1,409,057.65
15	1	\$31,323.02
19	2	\$17,045.88
23	1	\$3,305.84
26	1	\$10,407.60
29	2	\$23,528.28
31	2	\$84,045.24
34	2	\$109,050.94
36	1	\$70,526.52
39	3	\$145,648.60
41	2	\$23,051.37
43	4	\$81,382.46
44	4	\$209,760.56
45	1	\$37,737.27
57	1	\$7,324.48
60	1	\$54,257.76
72	2	\$22,412.87
74	1	\$30,636.63
75	4	\$123,110.29
84	12	\$373,384.64
108	1	\$39,887.60
<b>TOTAL</b>	<b>195</b>	<b>\$6,650,982.35</b>



# REACTIVACIÓN DE PRÉSTAMOS HIPOTECARIOS, H.ESPECIAL Y SEGURO HIPOTECARIO



ENTIDAD	SERVIDORES PUBLICOS	MONTO REACTIVADO
1	8	\$471,504.45
2	2	\$10,470.44
4	1	\$1,047.06
8	1	\$562.84
6	1	\$2,216.18
8	2	\$13,579.21
9	1	\$327.70
1203	1	\$1,046.98
1204	1	\$433,214.53
19	1	\$2,530.66
75	2	\$114,925.63
<b>TOTAL</b>	<b>21</b>	<b>\$1,051,425.68</b>

